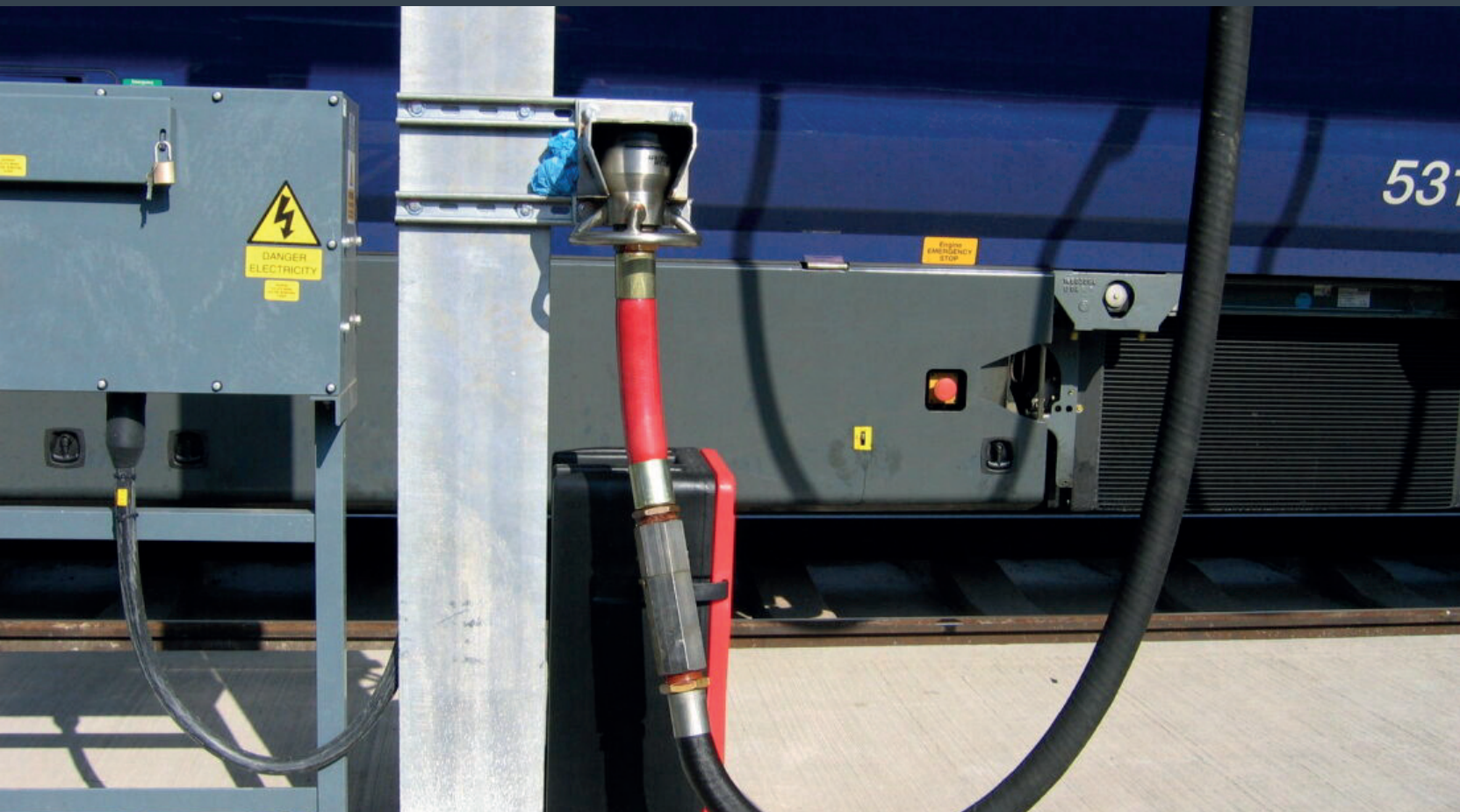


Flyte Coupling

Bulk Rail Fuelling Coupling

ifcinflow



The IFC Flyte Coupling is used for the refuelling of trains in rail service depots. This dry disconnect type coupling has a 1/2" BSP threaded inlet and is designed to fit onto a standard 1-1/2" BSP threaded fuel hose.

Features and Benefits

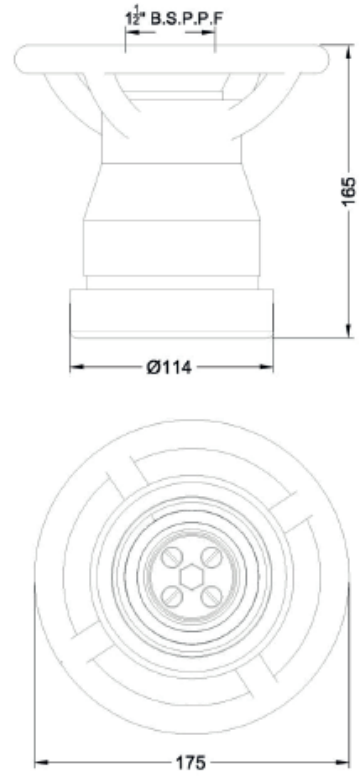
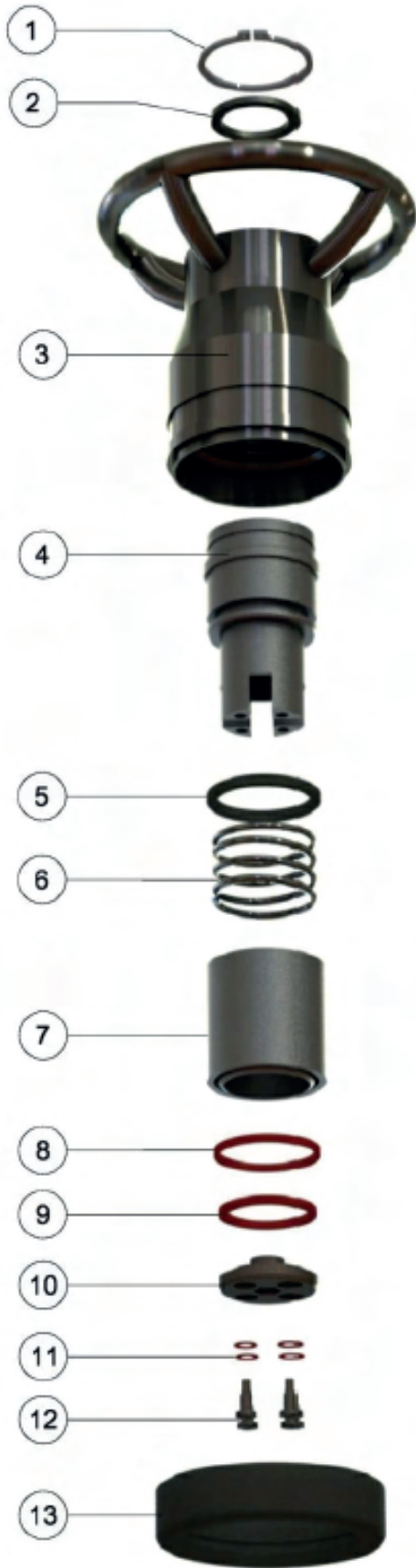
- Screw connect dry break coupling for bulk rail fuelling applications.
- Flow rates from 50-650 L/min provide optimum fuelling times
- Screw connect dry break valve allows safe and easy connection to fuel tanks
- 1 1/2" BSPF inlet compatible with most commonly used train refuelling hoses
- Viton seals provide full resistance to all existing and new fuel blends
- High impact steel body for durability and strength
- Corrosion resistant coating for long working life
- Durable forged steel handle gives excellent levels of operator control
- Unique hex socket fitting allows fast and easy installation
- Interchangeable with all existing rail couplings
- Easy replacement cartridge, quick servicing, and short down time.

Safety by Design

ifcinflow

Unit 3 Ryder Way
Basildon
Essex SS13 1QH

ifcinflow.com
+44 (0) 1268 596 900
sales@ifcinflow.com



	Part Number	Description
●	Flyte-01	Circlip
● ●	Flyte-02	Hose End Seal, Viton
	Flyte-03	Outer Coupling Body
●	Flyte-04	Inner Poppet
● ●	Flyte-05	Quad Seal, Viton
●	Flyte-06	Spring
●	Flyte-07	Sliding Poppet Sleeve
● ●	Flyte-08	Poppet Seal, Viton
● ●	Flyte-09	Cap Seal, Viton
●	Flyte-10	End Cap
● ●	Flyte-11	Washers, Fibre
●	Flyte-12	Screws
	Flyte-13	Rubber Bumper

- Part of Flyte 20- Replacement Inner Cartridge Assembly
- Part of Flyte 21- Seal Replacement Kit



Unit 3 Ryder Way
Basildon
Essex SS13 1QH

Safety by Design

ifcinflow.com
+44 (0) 1268 596 900
sales@ifcinflow.com

