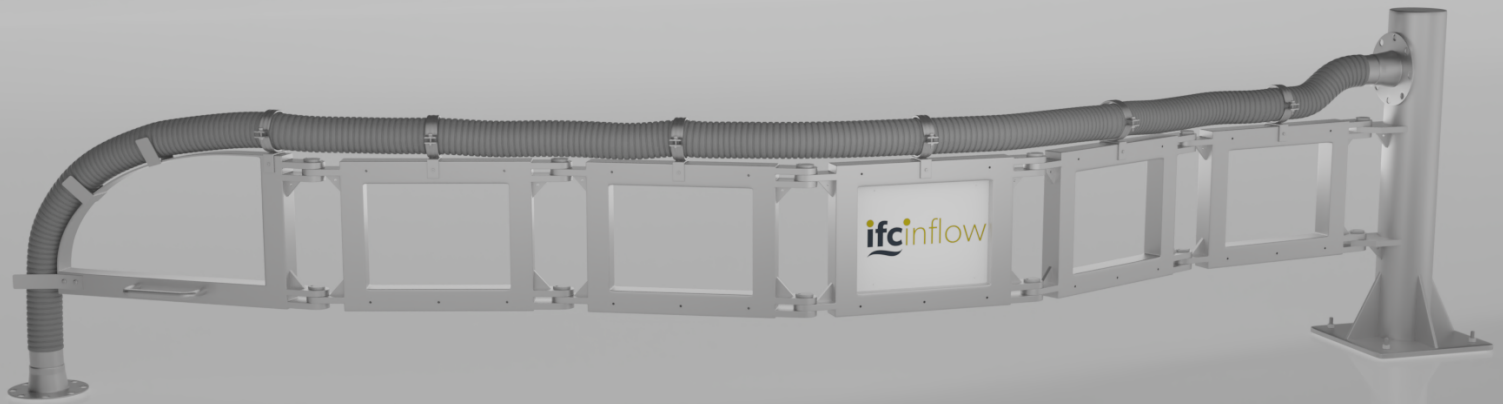


HoseLoad

Hose Support Arm



The IFC HoseLoad system is a unique product designed to provide a safe and easy to use solution for the handling of tanker loading and unloading hoses.

Features and Benefits

- **Eliminate Manual Handling of Heavy Hoses** - The hose is fully supported across its length using a unique structure. This eliminates the issue of manual handling and is ideal for heavy, large bore or long hoses.
- **Eliminate Trip Hazards** - The hose is raised above the ground. This keeps the hoses off the floor and eliminates the often serious trip hazards.
- **Increased Hygiene** - By keeping the hose off the floor we are providing a more hygienic environment for the hose to be used in. No more risk of the coupler getting dirty or the hoses being contaminated.
- **Reduces Hose Wear** - As the hose is not being dragged across the floor this drastically reduces the damage and wear and tear on it. Benefits of this include longer hose life, reduced risk of drive overs, cleaner hoses, etc.
- **Safer Hose Storage** - The swing arms will fold in on themselves providing neat and tidy storage. This also helps eliminate trips and accidental drive overs.
- **Cost Saving** - Protects hoses from wear and damage, saving you money on replacements and avoiding costly spills.
- **Tidy Work Area** - Prevents hoses from cluttering the ground, improving organisation and overall workflow efficiency.

Safety by Design



Unit 3 Ryder Way
Basildon
Essex SS13 1QH

ifcinflow.com
 +44 (0) 1268 596 900
 sales@ifcinflow.com

Specifications

Technical Features	
Mounting plate	20mm thick mounting plate with oil lite bushes to provide easy mounting to walls and steel columns
	Mild steel, powder coated
Hose support sections	Mild steel galvanised box sections in relevant lengths with multiple mounting points for hose clamps and support brackets.
	Mild steel, hot dip galvanised
Hose support end section	Special curved reversable end support section, mild steel galvanised with hose end hanger hook
	Mild steel, hot dip galvanised
Hose support brackets	Stainless steel hose brackets to secure hose to arm. Standard 1 per section. Option for up to 3 per section.
	304 stainless steel, one per section (additional hoops available)
Product Codes	
HSA - 3	3.3m long hose support arm
HSA - 4	4.1m long hose support arm
HSA - 5	4.8m long hose support arm

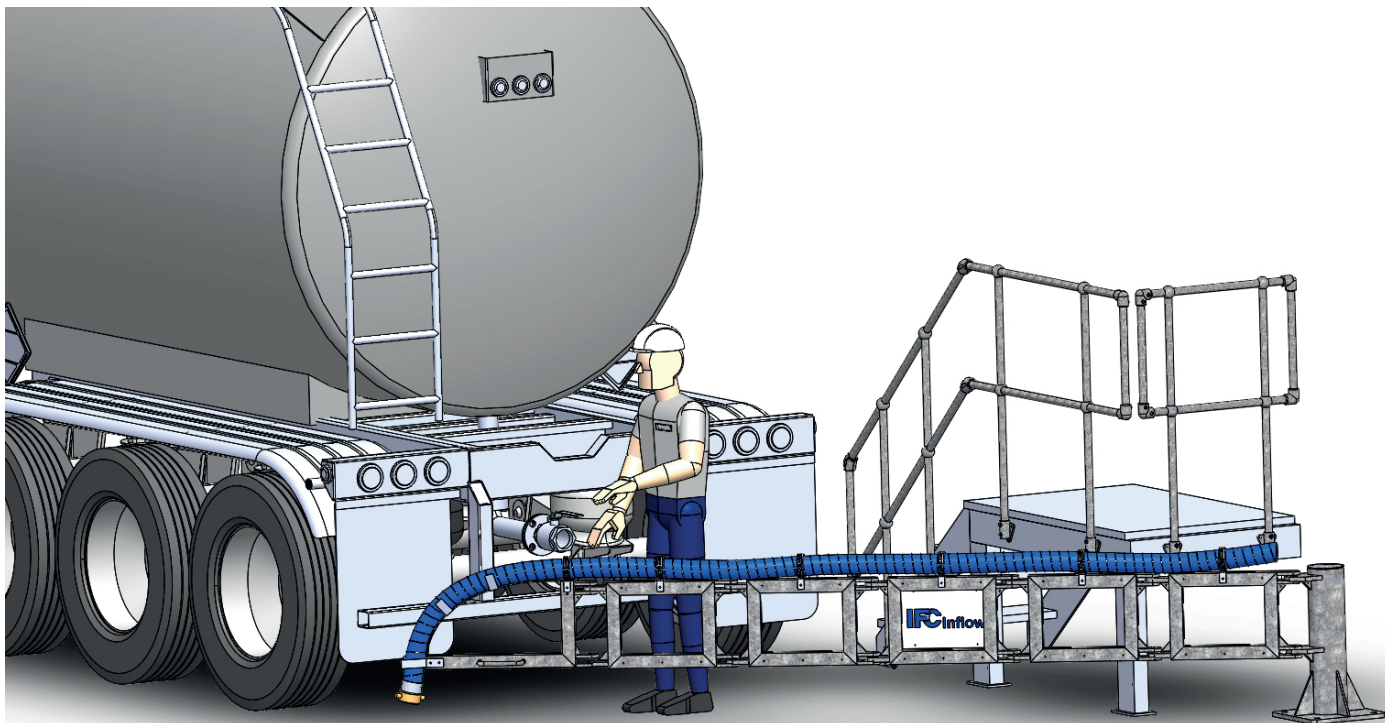
Options & Accessories

Options

- Modular system can have sections added and removed to support hoses up to 5 meters in length.
- Standpost height can be adjusted to suit different site requirements.
- Top or bottom mounted

Accessories

- Dry Disconnect or Safety Breakaway Couplings
- Optional guttering accessory to drain towards or away from loading point.
- Hydraulic end assembly for assisted lifting.
- Multiple hose support version available



ifcinflow

Unit 3 Ryder Way
Basildon
Essex SS13 1QH

Safety by Design

ifcinflow.com
+44 (0) 1268 596 900
sales@ifcinflow.com

